

FEATURES

- High end aluminum heatsink with a unique elegant design
- Illuxtron patented optical lens system that makes pin-hole light possible
- Anti glare cap that ensures no stray light. The total light opening is only 8mm!



With integrated PSU adapter, not visible after installation.



COLOURS

Available colours:



| Nr | Housing | Ring |
|-------|------------|----------|
| | RAL 9016 | |
| XX=61 | Matt white | / Gold |
| XX=63 | Matt white | / Silver |
| XX=62 | Matt white | / Black |
| XX=65 | Matt white | / White |
| XX=52 | Matt white | / Beige |
| XX=53 | Matt white | / Bronze |
| XX=54 | Matt white | / Green |



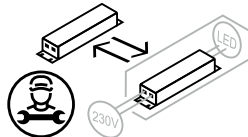
| Nr | Housing | Ring |
|-------|------------|----------|
| | RAL 9005 | |
| XX=71 | Matt black | / Gold |
| XX=74 | Matt black | / Silver |
| XX=72 | Matt black | / Black |
| XX=76 | Matt black | / White |
| XX=70 | Matt black | / Beige |
| XX=78 | Matt black | / Bronze |
| XX=79 | Matt black | / Green |

Pointer Spot Track 3F
Adjustable

SPECIFICATIONS

| | |
|----------------------------|---|
| Beam angle (FWHM) | 35° (45° FWTM) / 60° (80° FWTM) |
| Fixture material | Housing: Die cast aluminium |
| Environment | Indoor |
| IK rate | IK10 |
| Operating temperature (Ta) | -20°C / +45°C 1 |
| Safety marks | EN60598 / EN62031 / EN62471 |
| EMC compliance | EN55015 |
| Colour consistency (SDCM) | MacAdam step 3 |
| Warranty | 7 years * (within the European Union and the countries of the Free Trade Association for products delivered after 1 May 2015) |
| Energy class | These products contain a light source of energy efficiency class F (2700K/3000K) and class E (4000K) |

This luminaire contains built-in LED lamps. There are no exchangeable parts inside the luminaire. EU 874/2012



POINTER SPOT TRACK 3F (dimmable - incl. individual power supply)

CRI93 220-240V

ITEM SPECIFICATIONS (PART A)

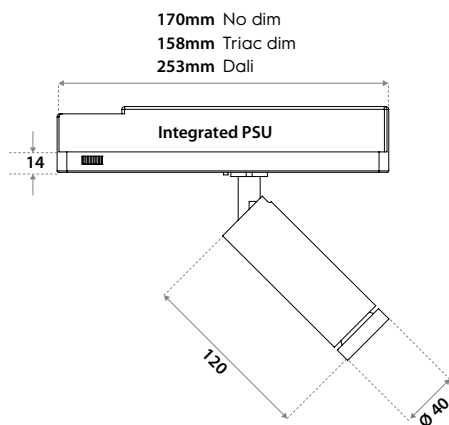
| Description | Item code | Input | W | Lm | Lm/W | CRI (typ.) | UGR | Pf | Ripple | Inrush current | B-16A Fuse |
|--|--------------|----------|-----|-----|------|------------|------|------|--------|----------------|------------|
| Pointer Spot Track 3F 35° 325 Lm 2700K CRI93 No dim | 0U3W03XXLU02 | 220-240V | 9,4 | 325 | 35 | 93 | 8.3 | 0.95 | <3% | 7A 13μS | 50 pcs |
| Pointer Spot Track 3F 35° 350 Lm 3000K CRI93 No dim | 0U3W03XXLV02 | 220-240V | 9,4 | 350 | 37 | 93 | 8.5 | 0.95 | <3% | 7A 13μS | 50 pcs |
| Pointer Spot Track 3F 35° 375 Lm 4000K CRI93 No dim | 0U3W03XXLW02 | 220-240V | 9,4 | 375 | 40 | 93 | 8.8 | 0.95 | <3% | 7A 13μS | 50 pcs |
| Pointer Spot Track 3F 60° 475 Lm 2700K CRI93 No dim | 0U3W03XXLX02 | 220-240V | 9,4 | 475 | 51 | 93 | 19.5 | 0.95 | <3% | 7A 13μS | 50 pcs |
| Pointer Spot Track 3F 60° 525 Lm 3000K CRI93 No dim | 0U3W03XXLY02 | 220-240V | 9,4 | 525 | 56 | 93 | 19.9 | 0.95 | <3% | 7A 13μS | 50 pcs |
| Pointer Spot Track 3F 60° 575 Lm 4000K CRI93 No dim | 0U3W03XXLZ02 | 220-240V | 9,4 | 575 | 61 | 93 | 20.2 | 0.95 | <3% | 7A 13μS | 50 pcs |
| Pointer Spot Track 3F 35° 325 Lm 2700K CRI93 Triac dim | 0U3W03XXLG02 | 220-240V | 9,4 | 325 | 35 | 93 | 8.3 | 0.92 | <5% | 48A 50μS | 20 pcs |
| Pointer Spot Track 3F 35° 350 Lm 3000K CRI93 Triac dim | 0U3W03XXLH02 | 220-240V | 9,4 | 350 | 37 | 93 | 8.5 | 0.92 | <5% | 48A 50μS | 20 pcs |
| Pointer Spot Track 3F 35° 375 Lm 4000K CRI93 Triac dim | 0U3W03XXLJ02 | 220-240V | 9,4 | 375 | 40 | 93 | 8.8 | 0.92 | <5% | 48A 50μS | 20 pcs |
| Pointer Spot Track 3F 60° 475 Lm 2700K CRI93 Triac dim | 0U3W03XXLK02 | 220-240V | 9,4 | 475 | 51 | 93 | 19.5 | 0.92 | <5% | 48A 50μS | 20 pcs |
| Pointer Spot Track 3F 60° 525 Lm 3000K CRI93 Triac dim | 0U3W03XXLL02 | 220-240V | 9,4 | 525 | 56 | 93 | 19.9 | 0.92 | <5% | 48A 50μS | 20 pcs |
| Pointer Spot Track 3F 60° 575 Lm 4000K CRI93 Triac dim | 0U3W03XXLM02 | 220-240V | 9,4 | 575 | 61 | 93 | 20.2 | 0.92 | <5% | 48A 50μS | 20 pcs |
| Pointer Spot Track 3F 35° 325 Lm 2700K CRI93 Dali | 0U3W03XXLO02 | 220-240V | 9,4 | 325 | 35 | 93 | 8.3 | 0.95 | <3% | 5A 50μS | 50 pcs |
| Pointer Spot Track 3F 35° 350 Lm 3000K CRI93 Dali | 0U3W03XXLI02 | 220-240V | 9,4 | 350 | 37 | 93 | 8.5 | 0.95 | <3% | 5A 50μS | 50 pcs |
| Pointer Spot Track 3F 35° 375 Lm 4000K CRI93 Dali | 0U3W03XXLL02 | 220-240V | 9,4 | 375 | 40 | 93 | 8.8 | 0.95 | <3% | 5A 50μS | 50 pcs |
| Pointer Spot Track 3F 60° 475 Lm 2700K CRI93 Dali | 0U3W03XXL302 | 220-240V | 9,4 | 475 | 51 | 93 | 19.5 | 0.95 | <3% | 5A 50μS | 50 pcs |
| Pointer Spot Track 3F 60° 525 Lm 3000K CRI93 Dali | 0U3W03XXL402 | 220-240V | 9,4 | 525 | 56 | 93 | 19.9 | 0.95 | <3% | 5A 50μS | 50 pcs |
| Pointer Spot Track 3F 60° 575 Lm 4000K CRI93 Dali | 0U3W03XXL502 | 220-240V | 9,4 | 575 | 61 | 93 | 20.2 | 0.95 | <3% | 5A 50μS | 50 pcs |

ITEM SPECIFICATIONS (PART B)

| Description | Safety class | Energy class | Weight | Dimensions single carton | Quantity per carton | Expected Lifetime | | | Reported Lifetime* | | |
|--------------------------------------|--------------|--------------|--------|--------------------------|---------------------|-------------------|-------------|------------|--------------------|--------------|------------|
| | | | | | | L70B10 | L80B10 | L90B10 | L70B10 | L80B10 | L90B10 |
| Pointer Spot Track 3F LV 2700K CRI93 | II | F | 349 gr | 220x120x90 mm | 42 pcs | 177.000 hrs | 113.000 hrs | 51.000 hrs | >102.000 hrs | >102.000 hrs | 51.000 hrs |
| Pointer Spot Track 3F LV 3000K CRI93 | II | F | 349 gr | 220x120x90 mm | 42 pcs | 177.000 hrs | 113.000 hrs | 51.000 hrs | >102.000 hrs | >102.000 hrs | 51.000 hrs |
| Pointer Spot Track 3F LV 4000K CRI93 | II | E | 349 gr | 220x120x90 mm | 42 pcs | 177.000 hrs | 113.000 hrs | 51.000 hrs | >102.000 hrs | >102.000 hrs | 51.000 hrs |

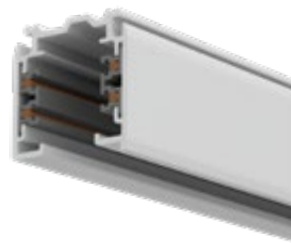
All values are measured at 230V (+/- 7%). *Based on 17.000hrs of LM80 testing at 700mA and a Tc85 °C.

DIMENSIONS



TRACKS

On request! Ask our sales department about the possibilities.



POINTER SPOT TRACK 3F (dimmable - incl. individual power supply)

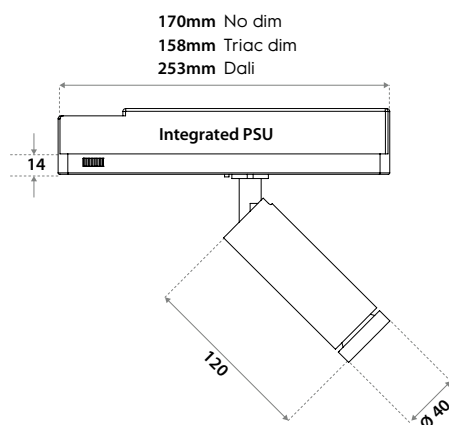
CRI82 220-240V
ITEM SPECIFICATIONS (PART A)

| Description | Item code | Input | W | Lm | Lm/W | CRI (typ.) | UGR | Pf | Ripple | Inrush current | B-16A Fuse |
|--|--------------|----------|-----|-----|------|------------|------|------|--------|----------------|------------|
| Pointer Spot Track 3F 35° 500 Lm 2700K CRI82 No dim | 0U2703XXLU02 | 220-240V | 9,2 | 500 | 54 | 82 | 9,8 | 0,95 | <3% | 7A 13μS | 50 pcs |
| Pointer Spot Track 3F 35° 525 Lm 3000K CRI82 No dim | 0U2703XXLV02 | 220-240V | 9,2 | 525 | 57 | 82 | 9,9 | 0,95 | <3% | 7A 13μS | 50 pcs |
| Pointer Spot Track 3F 35° 550 Lm 4000K CRI82 No dim | 0U2703XXLW02 | 220-240V | 9,2 | 550 | 60 | 82 | 10,1 | 0,95 | <3% | 7A 13μS | 50 pcs |
| Pointer Spot Track 3F 60° 550 Lm 2700K CRI82 No dim | 0U2703XXLX02 | 220-240V | 9,2 | 550 | 60 | 82 | 20 | 0,95 | <3% | 7A 13μS | 50 pcs |
| Pointer Spot Track 3F 60° 600 Lm 3000K CRI82 No dim | 0U2703XXLY02 | 220-240V | 9,2 | 600 | 65 | 82 | 20,3 | 0,95 | <3% | 7A 13μS | 50 pcs |
| Pointer Spot Track 3F 60° 650 Lm 4000K CRI82 No dim | 0U2703XXLZ02 | 220-240V | 9,2 | 650 | 71 | 82 | 20,6 | 0,95 | <3% | 7A 13μS | 50 pcs |
| Pointer Spot Track 3F 35° 500 Lm 2700K CRI82 Triac dim | 0U2703XXLG02 | 220-240V | 9,2 | 500 | 54 | 82 | 9,8 | 0,92 | <5% | 48A 50μS | 20 pcs |
| Pointer Spot Track 3F 35° 525 Lm 3000K CRI82 Triac dim | 0U2703XXLH02 | 220-240V | 9,2 | 525 | 57 | 82 | 9,9 | 0,92 | <5% | 48A 50μS | 20 pcs |
| Pointer Spot Track 3F 35° 550 Lm 4000K CRI82 Triac dim | 0U2703XXLJ02 | 220-240V | 9,2 | 550 | 60 | 82 | 10,1 | 0,92 | <5% | 48A 50μS | 20 pcs |
| Pointer Spot Track 3F 60° 550 Lm 2700K CRI82 Triac dim | 0U2703XXLK02 | 220-240V | 9,2 | 550 | 60 | 82 | 20 | 0,92 | <5% | 48A 50μS | 20 pcs |
| Pointer Spot Track 3F 60° 600 Lm 3000K CRI82 Triac dim | 0U2703XXLL02 | 220-240V | 9,2 | 600 | 65 | 82 | 20,3 | 0,92 | <5% | 48A 50μS | 20 pcs |
| Pointer Spot Track 3F 60° 650 Lm 4000K CRI82 Triac dim | 0U2703XXLM02 | 220-240V | 9,2 | 650 | 71 | 82 | 20,6 | 0,92 | <5% | 48A 50μS | 20 pcs |
| Pointer Spot Track 3F 35° 500 Lm 2700K CRI82 Dali | 0U2703XXLO02 | 220-240V | 9,2 | 500 | 54 | 82 | 9,8 | 0,95 | <3% | 5A 50μS | 50 pcs |
| Pointer Spot Track 3F 35° 525 Lm 3000K CRI82 Dali | 0U2703XXLI02 | 220-240V | 9,2 | 525 | 57 | 82 | 9,9 | 0,95 | <3% | 5A 50μS | 50 pcs |
| Pointer Spot Track 3F 35° 550 Lm 4000K CRI82 Dali | 0U2703XXL202 | 220-240V | 9,2 | 550 | 60 | 82 | 10,1 | 0,95 | <3% | 5A 50μS | 50 pcs |
| Pointer Spot Track 3F 60° 550 Lm 2700K CRI82 Dali | 0U2703XXL302 | 220-240V | 9,2 | 550 | 60 | 82 | 20 | 0,95 | <3% | 5A 50μS | 50 pcs |
| Pointer Spot Track 3F 60° 600 Lm 3000K CRI82 Dali | 0U2703XXL402 | 220-240V | 9,2 | 600 | 65 | 82 | 20,3 | 0,95 | <3% | 5A 50μS | 50 pcs |
| Pointer Spot Track 3F 60° 650 Lm 4000K CRI82 Dali | 0U2703XXL502 | 220-240V | 9,2 | 650 | 71 | 82 | 20,6 | 0,95 | <3% | 5A 50μS | 50 pcs |

ITEM SPECIFICATIONS (PART B)

| Description | Safety class | Energy class | Weight | Dimensions single carton | Quantity per carton | Expected Lifetime B10 reported (25°C) | | |
|-----------------------------------|--------------|--------------|--------|--------------------------|---------------------|---------------------------------------|-------------|-------------|
| | | | | | | L70B10 | L80B10 | L90B10 |
| Pointer Spot Track 3F 2700K CRI82 | II | F | 349 gr | 220x120x90 mm | 42 pcs | >60.000 hrs | >60.000 hrs | >60.000 hrs |
| Pointer Spot Track 3F 3000K CRI82 | II | F | 349 gr | 220x120x90 mm | 42 pcs | >60.000 hrs | >60.000 hrs | >60.000 hrs |
| Pointer Spot Track 3F 4000K CRI82 | II | E | 349 gr | 220x120x90 mm | 42 pcs | >60.000 hrs | >60.000 hrs | >60.000 hrs |

All values are measured at 230V (+/- 7%)

DIMENSIONS

TRACKS

On request! Ask our sales department about the possibilities.

